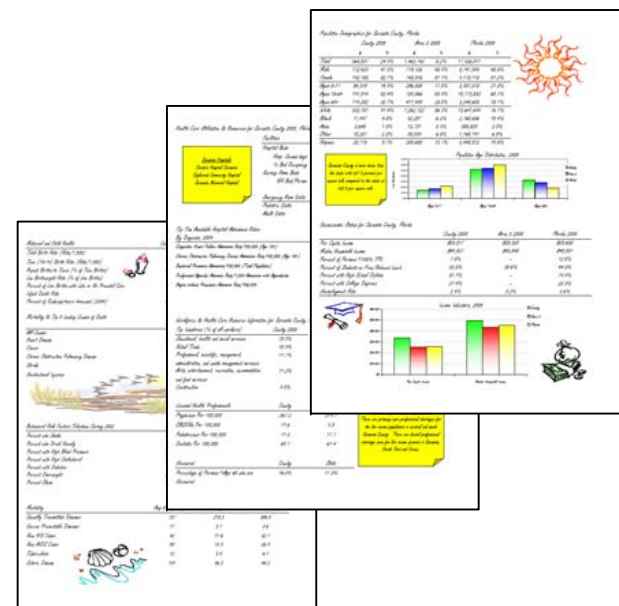


HPCSWF Programs

The Health Planning Council of Southwest Florida, Inc. (HPC) has a variety of programs and projects addressing the needs of the underserved in Area 8. These programs range from the Planning projects such as Persons with Disabilities Census and Survey for Emergency Preparedness, Mobilizing for Action through Planning and Partnerships, nutrition and activity initiatives, planning for the uninsured and underinsured, and developing user-friendly planning documents like the County Profiles.



The Health Planning Council of Southwest Florida, Inc. (HPC) is the lead agency for the Ryan White Title II, State HOPWA, AIDS Insurance Continuation Program, and the Sarasota/Manatee HUD HOPWA programs in Area 8. HPC is also the central agency and care coordination provider for the Early Steps program for infants and toddlers.

To order the utilization data subscription or snapshot data, contact Susan Mitchell, Director of Health Planning at (239) 433-6700

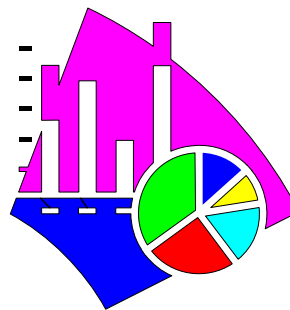
Health Planning Council of Southwest Florida

The Health Planning Council of Southwest Florida, Inc. (HPC) is the designated local health council for District 8, which includes Charlotte, Collier, DeSoto, Glades, Hendry, Lee and Sarasota counties. The HPC is governed by a twelve-member Board of Directors whose membership is based on district population and made up of consumers, providers and purchasers of health care.

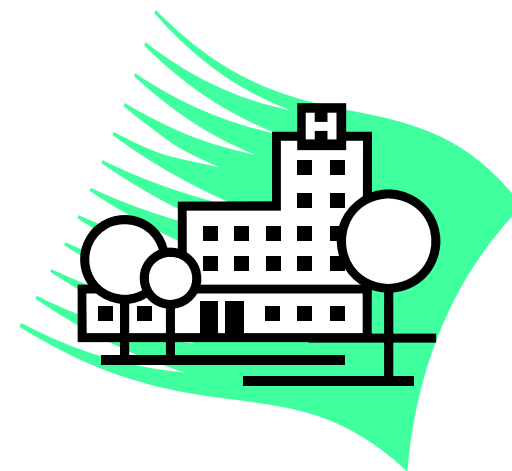
The Board of Directors of The Health Planning Council of Southwest Florida, Inc. subscribes to the philosophy that equal access to basic medical care is a right guaranteed to every individual, and that each individual has the right to participate in decisions made about his/her care.

The HPC works to improve the health care system by creating partnerships with public health departments, community health centers, providers and consumers. It provides health statistics and reports through quantitative and qualitative data collection and analysis, including focus groups and facilitating community meetings. HPC's philosophy maintains that policies relevant to District 8 can best be attained through participatory processes and the creation of materials that are user-friendly for both professionals and the public. These philosophies also recognize that individual health status is inextricably linked to primary and preventive health care services that are strategically located; accessible by public transportation; open at times that are convenient to the consumers; and free from cultural, racial, and lifestyle biases.

Since its establishment, the Health Planning Council of Southwest Florida's most significant impact on the community has been its efforts to increase the availability and accessibility of data and analysis relative to the health needs and health services within the region. Ongoing community needs assessments throughout the District show a continuing need for the compilation, analysis and distribution of health-related data.



Health Care Facility Utilization Data



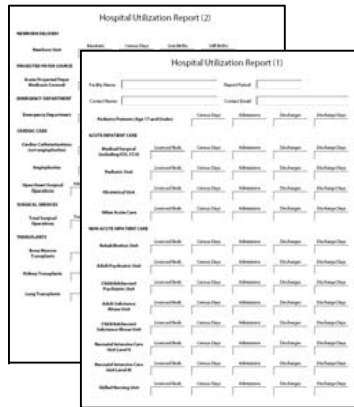
Serving Charlotte, Collier, DeSoto, Glades, Hendry, Lee and Sarasota Counties.

www.hpcswf.com

8961 Daniels Center Drive, Suite 401
Fort Myers, Florida 33912
(239) 433-6700

Data Collection

All nursing home and hospital facilities in Charlotte, Collier, DeSoto, Glades, Hendry, Lee and Sarasota counties are required by s. 408.033(1) and s. 408.033 (3) (b), Florida Statute (F.S.) to submit utilization data to the Health Planning Council of Southwest Florida, Inc.(HPCSWF). The HPCSWF collects this data on behalf of the Florida Agency for Health Care Administration pursuant to s. 59C-1.036(6), Florida Administrative Code. Nursing home and hospital facilities are required to submit data to the HPCSWF monthly.



The data for 2007 will be submitted via an electronic form (adobe file) through email. The data will come to HPCSWF in an electronic form that can be used to create an updated data base instead of re-entering of data manually where errors can occur. This effort is being undertaken not only to reduce the incidence of data entry error, but to speed up the turn around time in getting the data set to the subscribers. Data is due to the Health Planning Council of Southwest Florida by the 20th of the month following the reporting period (e.g. October data is due by November 20th).

Data Files

Utilization data is collected and stored in a Microsoft Excel spreadsheet file. The file contains all the data collected for the current calendar year-to-date PLUS the previous calendar year for comparative purposes. The raw data is contained in two worksheets in the file. The rest of the worksheets in the file contain reports and graphs linked to the raw data to make analysis and reporting easier.

Monthly Reports

Hospital Data

For every month, there is a worksheet containing the reports for types of inpatient services. Licensed Beds, Census Days, Admissions, Discharges, Average Daily Census, Average Length of Stay, and Occupancy Rates by facility by month are included for the following: Total Hospital, Acute Care, Medical/Surgical, Obstetric Units, Pediatric Units, Other Acute Care Units, Neonatal Intensive Care Unit Level II, NICU Level III, Rehabilitation, Psychiatric, Substance Abuse, and Skilled Nursing Units and Newborns. Newborns also includes the number of live births and still births. There is also a report on Pediatric Patients and Medicare Patients.

Total Hospital Report		January-03						
FACILITY	Licensed Beds	Census Days	Admissions	Discharges	Discharge Average Daily Days	Average Length of Stay	Occupancy Rate	
County								
Facility	100	2,000	800	850	2,000	65	2.4	64.5%
Facility	100	2,500	900	850	2,500	81	2.9	80.6%
Facility	100	1,000	700	725	1,000	32	1.4	32.3%
Subdistrict # Total	300	5,500	2,400	2,425	5,500	177	2.3	59.1%



There is a monthly report on the procedures performed in the facility that month: inpatient and outpatient surgical procedures, cardiac catheterizations, open heart surgeries, and emergency room visits.

Skilled Nursing Data

The Nursing Home Data File contains reports with information for each facility including a bed inventory, monthly census information and census information by payer. There are also monthly reports on discharge disposition, cognitively impaired units and average daily room rates by facility. Hospital-based skilled nursing units are included in the file.

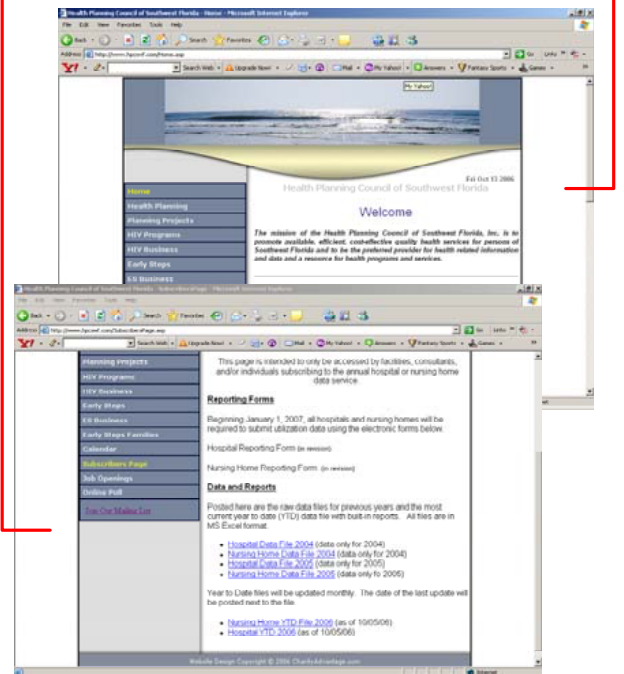
Date	Facility	County	Type	Community Beds	Skilled Beds	Total Beds	Average Daily Census	Month-End Census	Occupancy Rate
Jan-02	Facility 1	NH	100	0	100	90	99	99	98.2%
Jan-02	Facility 1	NH	100	0	100	90	99	99	94.7%
Jan-02	Facility 1	NH	100	0	100	90	99	99	97.8%
Jan-02	Facility 1	NH	100	0	100	90	99	99	98.2%
Jan-02	Facility 1	NH	100	0	100	90	99	99	94.5%
Jan-02	Facility 1	NH	100	0	100	90	99	99	91.8%
Jan-02	Facility 1	NH	100	0	100	90	99	99	92.8%
Jan-02	Facility 1	NH	100	0	100	90	99	99	94.7%
County Nursing Home Subtotal				800	0	800	792	792	99.1%

Also included in the Nursing Home Data File are graphs and data on the acute care facilities occupancy rates. These provide skilled nursing facilities with an indicator of future utilization.

Web Access

Subscribers will be provided a username and password to access the HPCSWF website (www.hpcswf.com) Subscribers Page. This page will contain the past two years of data in separate Excel files, report forms, and the updated data files for Hospitals and Nursing Homes. Supplemental reports (usually resulting from a special request from a subscriber) will also be posted on this page in case other subscribers would like the information in that format. This process will eliminate the monthly emailing of files that often create problems with users email servers and spam blockers.

Graph files that data can be dropped into will also be housed on the site for subscribers' use. This cuts down on the size of the data file. This process along with the electronic data submission via the email form are geared toward making the delivery of utilization data to subscribers easier.



Subscribers often have questions, need additional information, or have special data requests. For subscribers, assistance is included in the subscription.

To order the utilization data subscription or snapshot data, contact Susan Mitchell, Director of Health Planning at (239) 433-6700